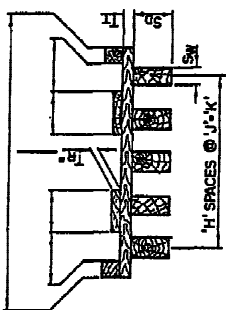
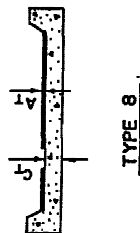


SUPERSTRUCTURE																							
DECKING				STRINGERS OR GIRDERS				DIAPHRAGMS OR FLOOR BEAMS		RAILING													
SPAN NO.	TYPE	ET	AT	CT	TF	MAT'L	SHAPE	MAT'L	SW	S ₀	F _T	H	J	K	S	COND	SHAPE	D ₀	D _W	D ₀	COND	SHAPE	COND
1-12						Pre-cast	Deck															8	7

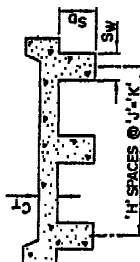
INTERIOR UNITS & 2 curb units



- SUPERSTRUCTURE TYPE**
- TIMBER STRINGER & PLANK DECK.
 - TIMBER STRINGER & LAMINATED DECK.
 - TIMBER STRINGER & CONCRETE DECK.
 - STEEL STRINGER & PLANK DECK.
 - STEEL STRINGER & LAMINATED DECK.
 - STEEL STRINGER & CONCRETE DECK.
 - R.C. DECK GIRDER.
 - R.C. SLAB.
 - OTHER-SEE DETAIL ON FORM III.



TYPE 8

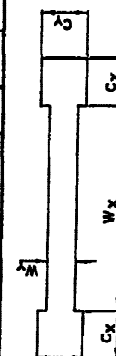
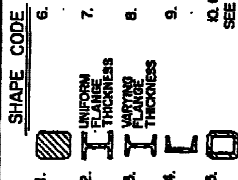


TYPE 7

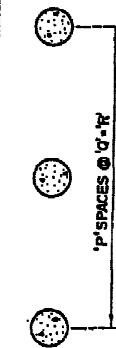
TYPE 4, 5, 6

TYPE 1, 2, 3

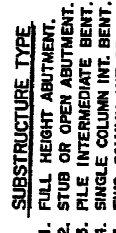
SUBSTRUCTURE													
CAP			COLUMNS OR PILES				WEBWALLS						
SUPPORT NO.	TYPE	MAT'L	B _W	B _D	C _V	C _R	P	O	R	COND.	W _X	W _Y	COND.
1-12	2	2	18"	18"	6"	36"	4	6.0'	24"	6"			
2-12	3	2	18"	18"	6"	36"	4	6.0'	24"	6"			



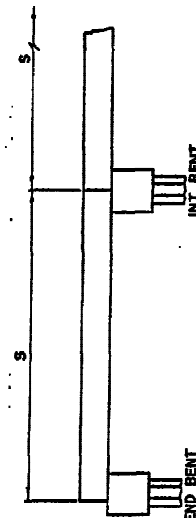
SECTION THRU SOLID WALL PIER



SECTION THRU PILE BENT AT CAP



SECTION THRU PILE BENT AT INT. BENT



LONGITUDINAL SECTION

INSR. BY SCS
DATE 7-27-98
DIST. 7 COUNTY CALHOUN ROUTE 274 SEC. 3 LOG 11.77 BRIDGE NO. M2648

BRIDGE INSPECTION REPORT-FORM IV
DETAILS OF SHORT SPAN BRIDGES